

FIGURES

Mashai Reservoir Area-Capacity Curve

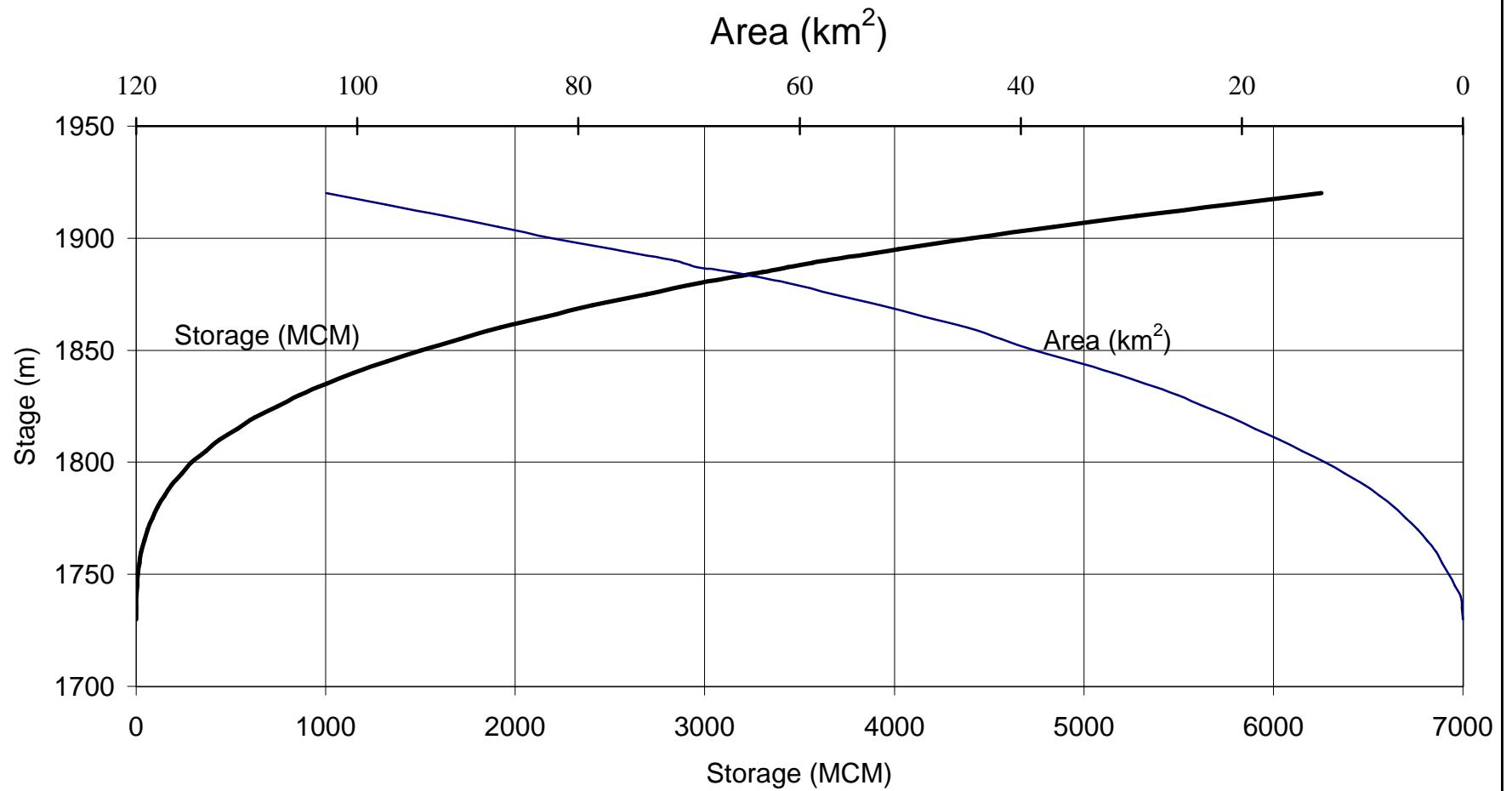
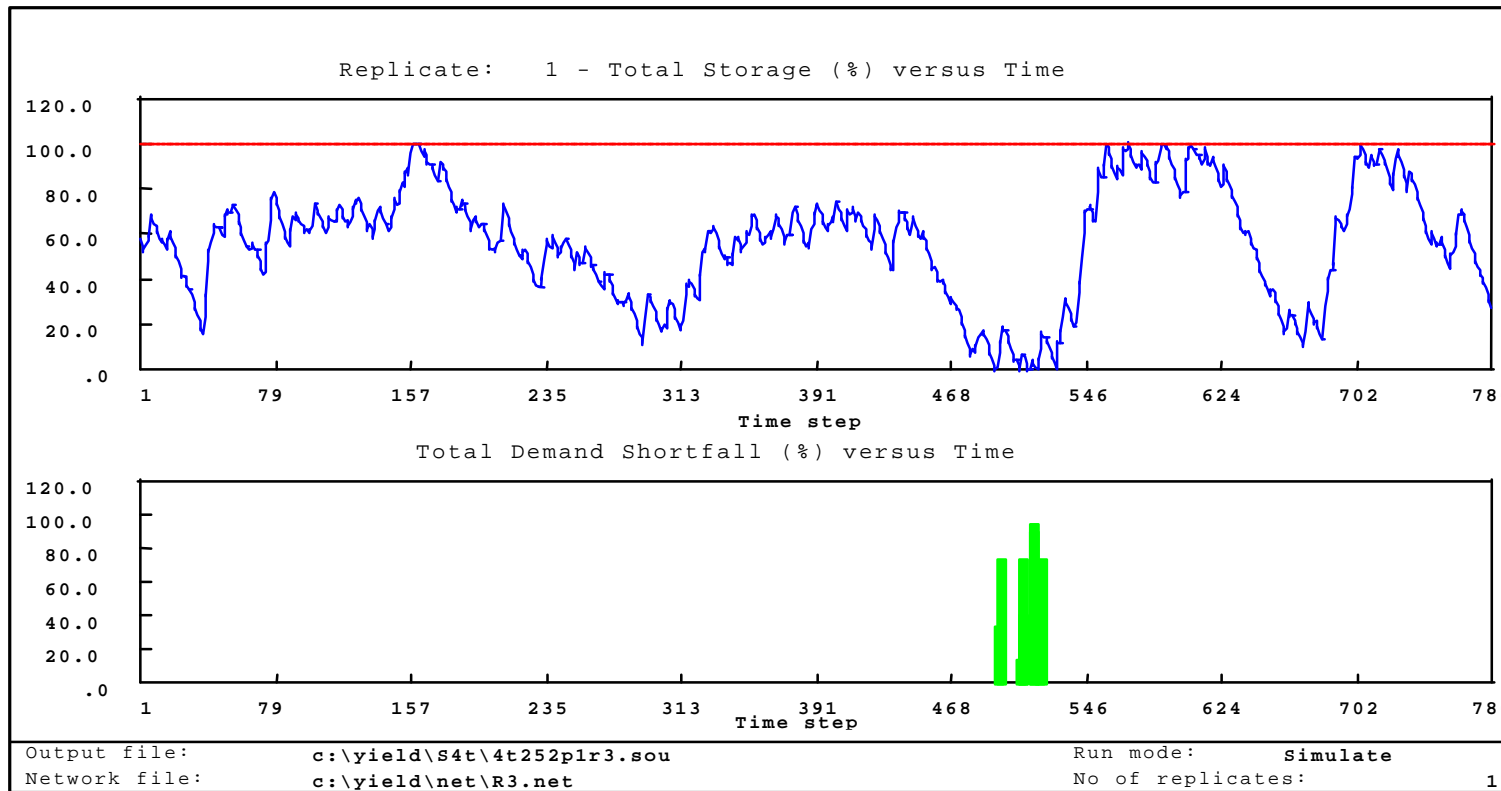


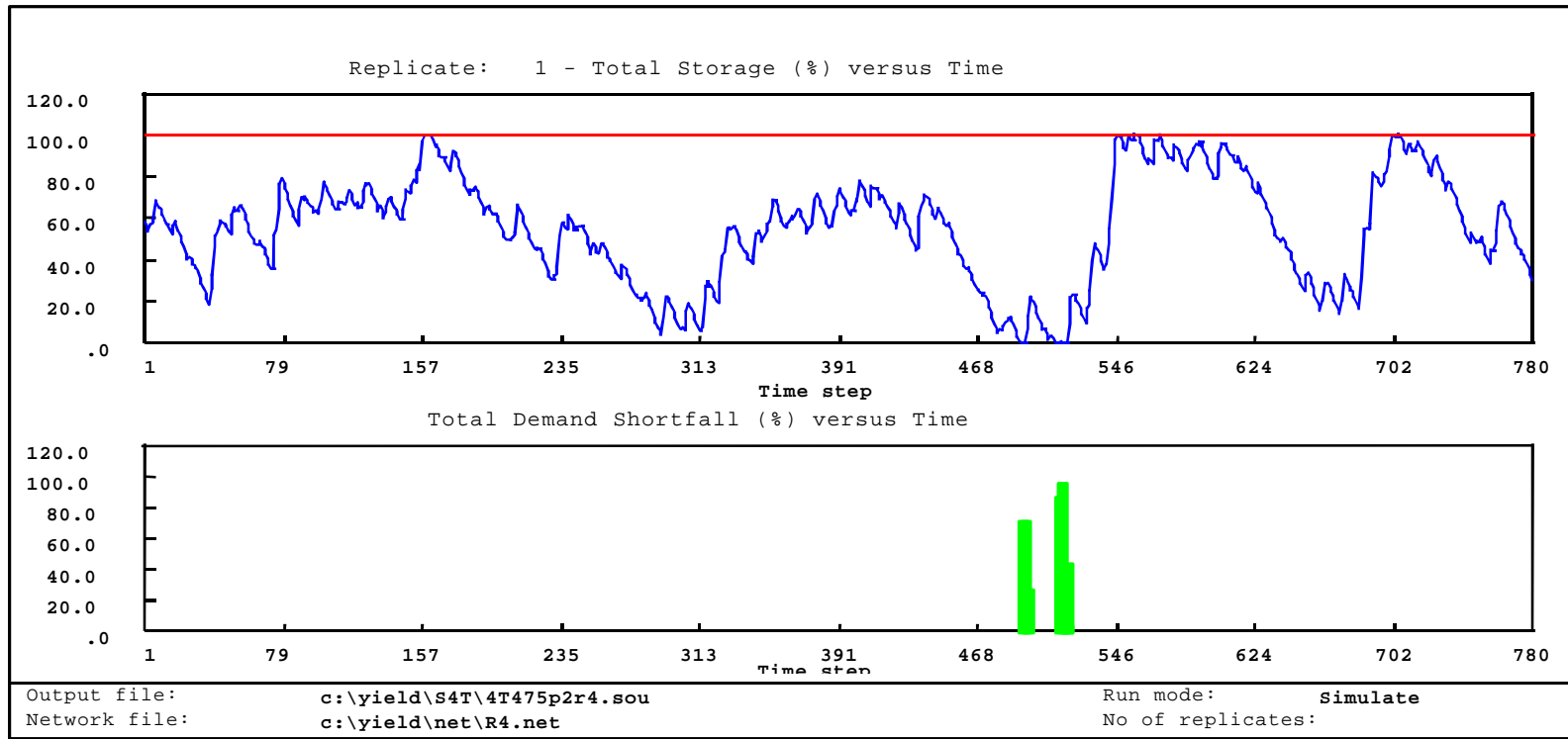
FIGURE 4.5



Scale: Vertical axis of the upper graph is in percent of total active storage of the reservoirs. The lower graph is shortfalls expressed as percentage of yield. Horizontal axis is in months starting from October 1930.

Graphs: The upper graph shows the storage fluctuations expressed as percentage of active storage. The lower graph shows possible shortfalls within the same period.

Figure 5.1 – Phase 1 – Storage levels of combined system for Scenario 4 – Configuration II Includes Katse, Mohale and Matsoku Diversion



Period	Year Starting
1	10/1930
79	04/1936
157	09/1942
235	04/1949
313	04/1957
391	04/1962
468	09/1968
546	03/1975
624	09/1981
702	03/1988
780	09/1994

Scale: Vertical axis of the upper graph is in percent of total active storage of the reservoirs. The lower graph is shortfalls expressed as percentage of yield. Horizontal axis is in months starting from October 1930.

Graphs: The upper graph shows the storage fluctuations expressed as percentage of active storage. The lower graph shows possible shortfalls within the same period.

Figure 5.2 – Phase 2 – Storage levels of combined system for Scenario 4 – Configuration III Includes Katse, Mohale, Matsoku Diversion and Mashai

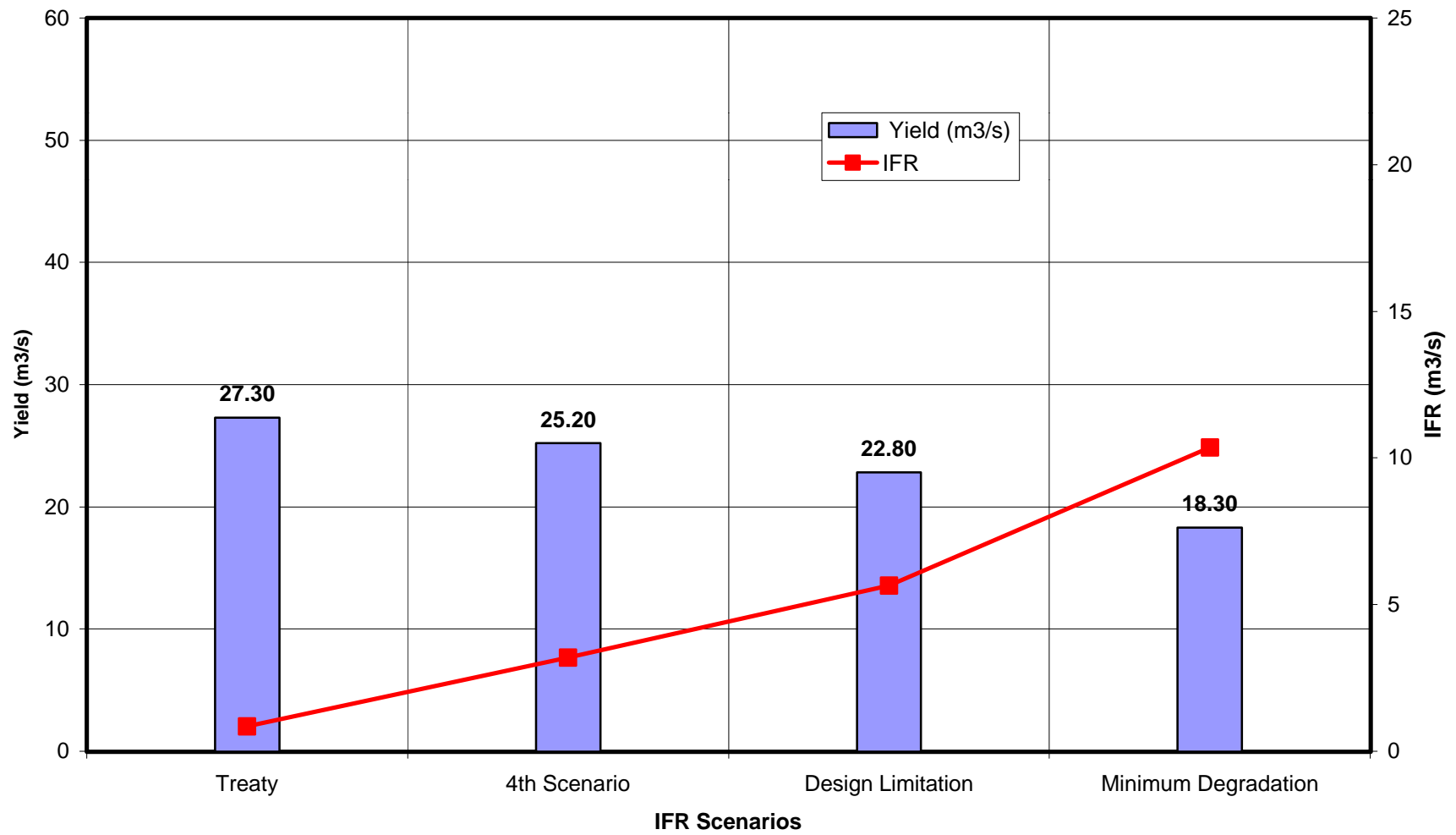


Figure 5.3 - System Yield Vs IFR Phase 1

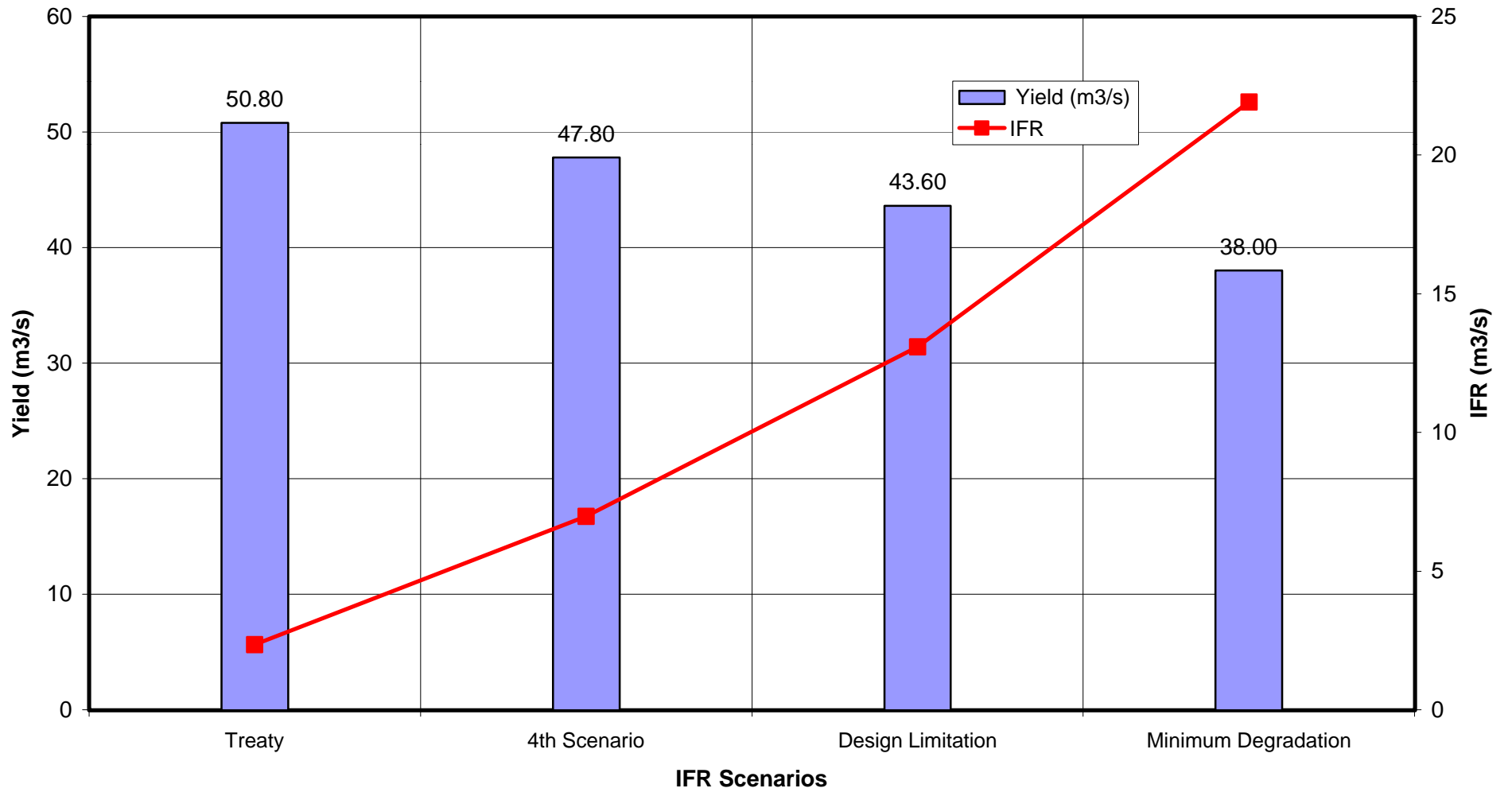


Figure 5.4 - System Yield Vs IFR Phase 1 & 2.